

Rhythm 4 You

RESOURCE MASTER



Clap these rhythms. Then circle the beat in line **b** that changes from line **a** each time. Sometimes you will circle more than one beat.

1. a. $\frac{4}{4}$ | ||

b. $\frac{4}{4}$ | ||

2. a. $\frac{4}{4}$ | ||

b. $\frac{4}{4}$ | ||

3. a. $\frac{4}{4}$ | ||

b. $\frac{4}{4}$ | ||

Circle the rhythm in each pair that contains four beats.

4. a. | ||

b. | ||

5. a. | ||

b. | ||

Fill in the blanks with \downarrow , \updownarrow , or $\­$, so that each rhythm has four beats.

6. ||

7. ||




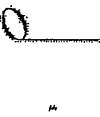


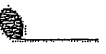








8. ||

9. ||

10. ||

NOTE & REST CHART

Name _____ Note _____ Rest _____ Beats _____ $1 \frac{4}{4}$ measure

Whole			4	
Half			2	
Quarter			1	
Eighth			$\frac{1}{2}$	
Sixteenth			$\frac{1}{4}$	

Week 1 — Quarter Notes

On every line:

1. Write the notes and counts.
2. Count the line out loud.
3. Perform the line on a single pitch.

A musical staff in 4/4 time showing four quarter notes. Above the staff, the numbers 1, 2, 3, and 4 are written with horizontal lines extending to the right. Below the staff, the numbers 1, 2, 3, and 4 are written under each corresponding note. The staff ends with a double bar line.

Counts & Notes

Write **counts** below to match the notes you see.

A musical staff in 4/4 time showing four quarter notes. To the left of the staff is a pentagon containing the number 1. Below the staff, there are four horizontal lines corresponding to the four notes, intended for writing counts. The staff ends with a double bar line.

Write **notes** on the line to match the **counts** below.

A musical staff in 4/4 time. To the left of the staff is a pentagon containing the number 2. Below the staff, the counts 1, 2, 3, 4, 1, 2, 3, 4 are written. The staff is blank for writing notes and ends with a double bar line.

Rhythm Dictation

Listen to the music example. Write the rhythm you hear, then the counts below.

A musical staff in 4/4 time. To the left of the staff is a pentagon containing the number 3. The staff is blank for writing a rhythm and ends with a double bar line.

A musical staff in 4/4 time. To the left of the staff is a pentagon containing the number 4. The staff is blank for writing a rhythm and ends with a double bar line.

A musical staff in 4/4 time. To the left of the staff is a pentagon containing the number 5. The staff is blank for writing a rhythm and ends with a double bar line.

Week 2 — Quarter Rests

On every line:

1. Write the notes and counts.
2. Count the line out loud.*
3. Perform the line on a single pitch.

*Count the capital R by saying "rest."

1 _____ 2 _____ 3 _____ 4 _____

1 R 3 R

Counts & Notes

Write **counts** below to match the notes you see.



1 _____ 2 _____ 3 _____ 4 _____ 1 _____ 2 _____ 3 _____ 4 _____

Write **notes** on the line to match the **counts** below.



$\frac{4}{4}$ _____

1 2 R R R 2 3 4

Rhythm Dictation

Listen to the music example. Write the rhythm you hear, then the counts below.



$\frac{4}{4}$ _____



$\frac{4}{4}$ _____



$\frac{4}{4}$ _____

Week 3 — Half Notes

On every line:

1. Write the notes and counts.
2. Count the line out loud.
3. Perform the line on a single pitch.

1 _____ 2 _____ 3 _____ 4 _____

Counts & Notes

Write **counts** below to match the notes you see.

1 _____ 2 _____ 3 _____ 4 _____ | 1 _____ 2 _____ 3 _____ 4 _____

Write **notes** on the line to match the **counts** below.

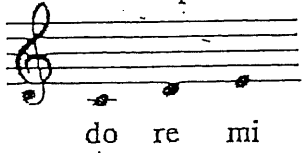
Rhythm Dictation

Listen to the music example. Write the rhythm you hear, then the counts below.

Adding Pitch To Rhythm

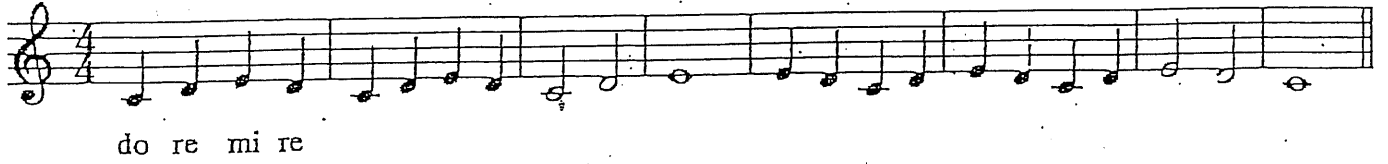
PITCH ROUTINE #1

Example 1




do re mi

①

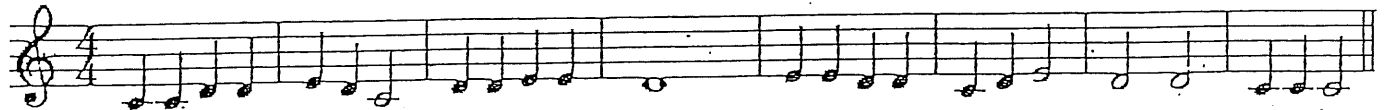


do re mi re

②



③



Example 2



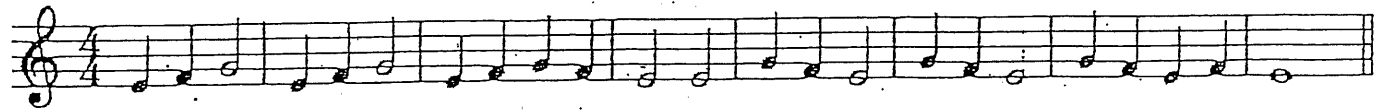
mi fa sol

④



mi fa sol fa

⑤



⑥



Lines 1 and 4, 2 and 5, 3 and 6 may be combined

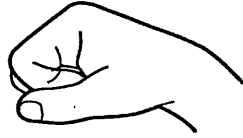
Name _____ Date _____

Curwen Hand Signs

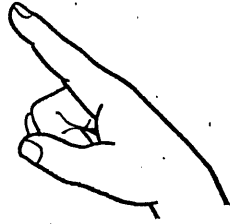
RESOURCE MASTER



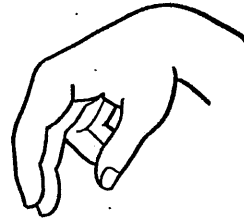
do



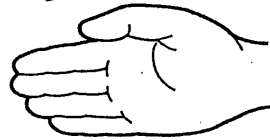
ti



la



so



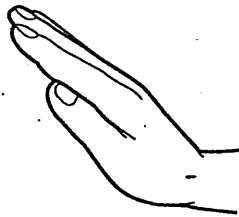
fa



mi



re



do

